



Green Lake Elementary capacity relief Community Meeting

Enrollment Planning

September 2019

Meeting Agenda

Problem: Green Lake Elementary is overcrowded with no room for additional portables on site.

Today's Goal: Present options for reducing Green Lake enrollment, answer questions and gather community feedback

Agenda:

- Background and timeline
- Capacity relief strategies
- Short-term strategy: geozone expansion
- Long-term strategy: boundary change
- Next steps
- Q & A
- Comments

Background and Timeline

Background:

In 2017, Enrollment Planning recommended boundary changes to the Green Lake attendance area. Community members opposed the changes and ultimately they were not approved. Since then the school has continued to grow.

Timeline:

Sept. 2019 – Community meetings to discuss geozone expansion

Oct.-Nov. 2019 – Board introduction and action on geozone expansion

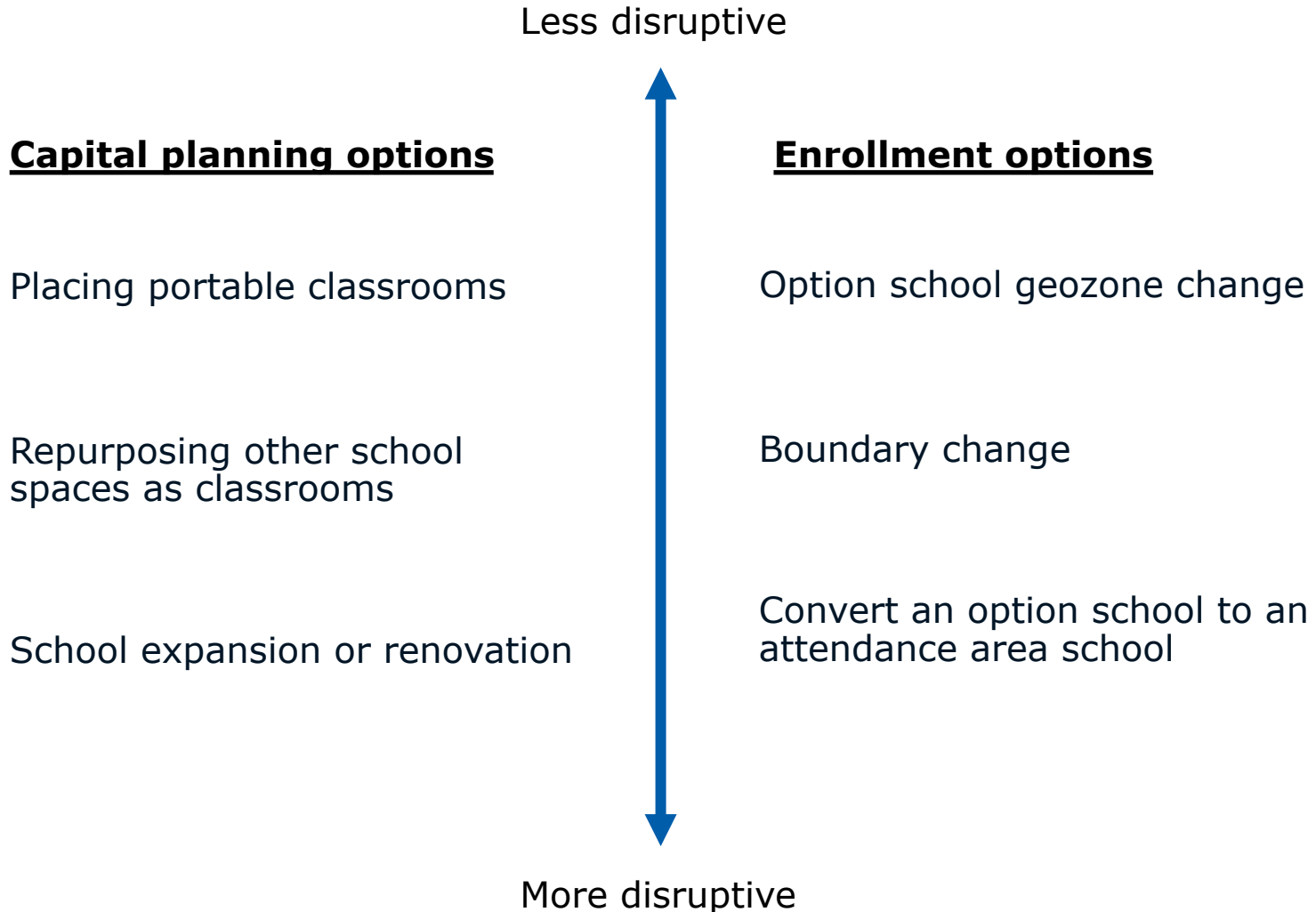
Feb. 2020 – Open Enrollment (families can apply for option schools)

Spring 2020 – Investigate boundary change options for 2021-22

Fall 2020 – Community meetings to discuss boundary change options

Winter 2020 – Possible board introduction and action on boundary change

Capacity relief strategies



Capital planning for capacity relief

Place portable classrooms:

Green Lake's site can't accommodate any more portables.

Repurpose other spaces for classrooms:

Green Lake has already repurposed all possible spaces, including the teacher's lounge.

Renovate or expand the school:

School construction requires funding (school levy), planning and construction; very long-term solution.



Enrollment planning for capacity relief



Expand option school geozones:

Less disruptive but provides limited enrollment relief.

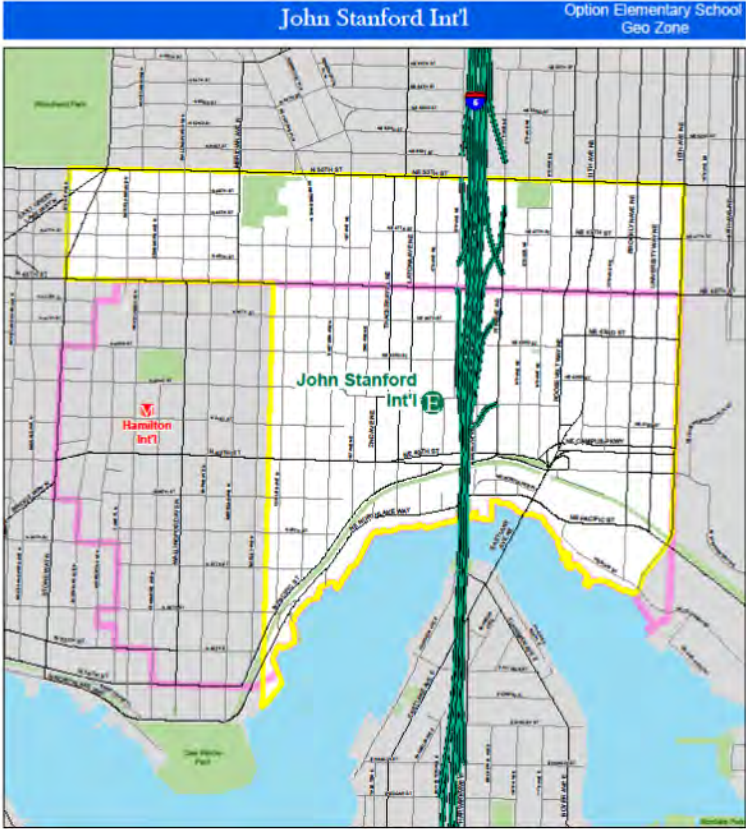
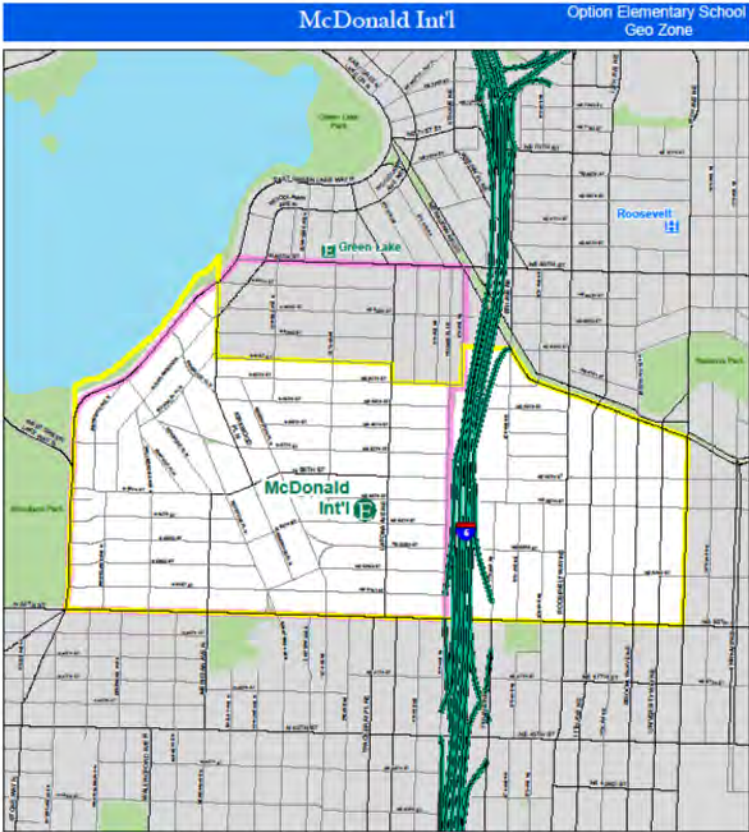
Boundary Change:

Options in the region are limited due to growing enrollment at nearby schools, disruptive for families.

Converting an option school to an attendance area school:

Very disruptive and reduces family choice.

Existing geozones | 2019-20



- Geo Zone
- E Elementary
- H High
- M Middle
- Walk Zone
- E Option Elementary
- H Option High
- S Service School

0 0.35 0.7 Miles

Map last revised: 6/11/2018

The names on this map are not intended to reflect the official name of any school building. They are instead intended to ensure better public understanding based upon familiar reference, particularly in situations where program and school building names differ. This information has been compiled by SP5 and is subject to change without notice. SP5 makes no representation or warranty, expressed or implied, as to accuracy, completeness, timeliness, or utility of the use of such information. SP5 shall not be held for any errors, omissions, or damages, including, but not limited to, lost revenues or lost profits resulting from the use or misuse of the information contained on this map. Any use of this map or information on this map is prohibited. Mapfile: 02_29_2014_10100011

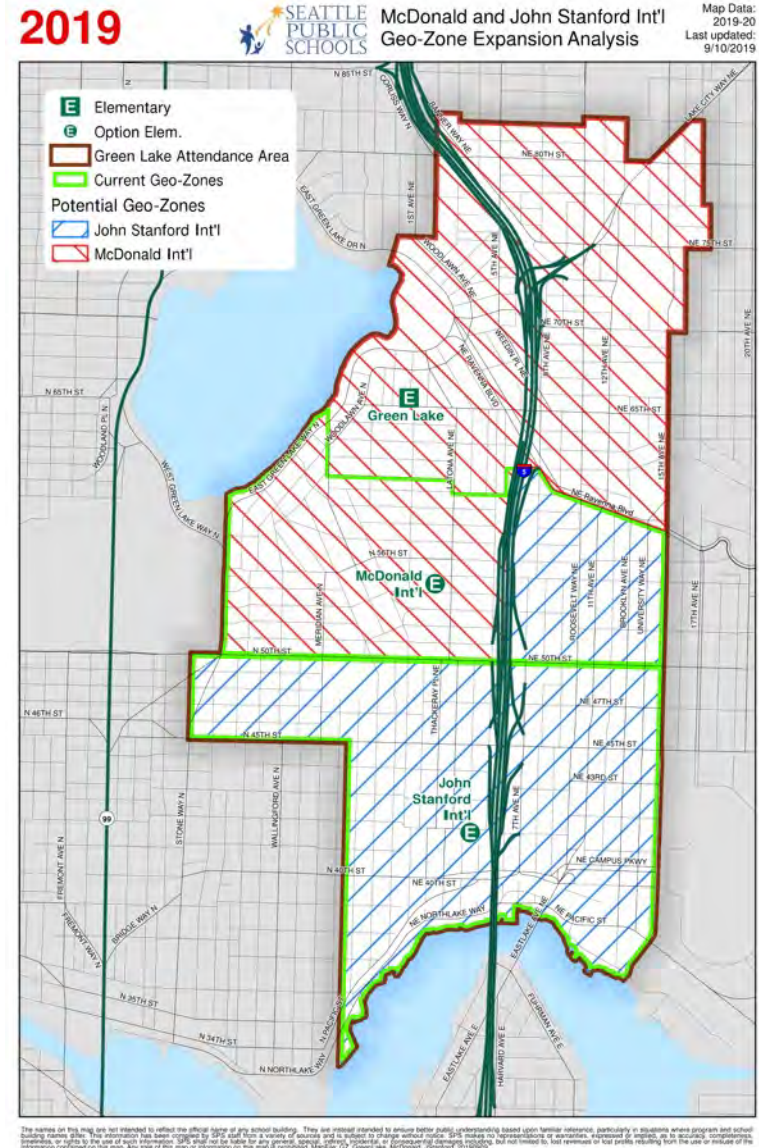


Expanding option school geozones | 2020-2021

Geozone tiebreaker:

Students who apply for option schools during open enrollment are assigned by tiebreaker and lottery order:

1. Students with both tiebreakers (in lottery # order)
2. Students with the sibling tiebreaker (in lottery # order)
3. Students with the geozone tiebreaker (in lottery # order)



Impact of expanding the geozones

How much will an expanded geozone reduce Green Lake's enrollment?

- The number of students who attend JSIS or McDonald because of an expanded geozone will vary each year depending on how many current students from other attendance areas have younger siblings entering kindergarten.
- By looking at the number of K students assigned without tiebreakers in previous years we can estimate how many Green Lake residents might use the expanded geozone tiebreaker to attend JSIS or McDonald.

Year	Green Lake residents attending JSIS or McDonald, K-5	Estimated additional K assignments from Green Lake attendance area with an expanded geozone
2017	528	13
2018	506	12
2019	495	6

Next Steps | geozone expansion



Timeline for geozone expansion:

- **Now:** Answer questions and get feedback on proposed geozone expansion.
- **October 3rd:** School Board Operations Committee reviews proposed geozone change.
- **October 16th:** Geozone change is introduced to the full School Board.
- **November 6th or 20th:** The School Board votes on geozone change.

Potential Boundary Change | 2021-22

- Limited options due to growing enrollment in the region
- May require a cascading boundary change that impacts several schools

Timeline:

- **Spring and Fall 2020:** Community meetings to review and discuss potential boundary changes
- **Winter 2020:** Enrollment Planning recommends a boundary change for board action
- **January 2021:** Board reviews recommended boundary scenario
- **Fall 2021:** If approved, the boundary change will be implemented



We want to hear from you!

Now:

- Question and Answer
- Comments

Later:

- growthboundaries@seattleschools.org
- Green Lake Capacity webpage: www.seattleschools.org/GLES-capacity

A photograph of four diverse young children smiling in a classroom. The image is overlaid with a semi-transparent blue filter. The children are of various ethnicities and are looking towards the camera.

Thank you!

**Ashley Davies, Director of Enrollment
Planning**

Enrollment Planning

growthboundaries@seattleschools.org

www.seattleschools.org/enrollment_planning

206 252 0760

Seattle, WA

